

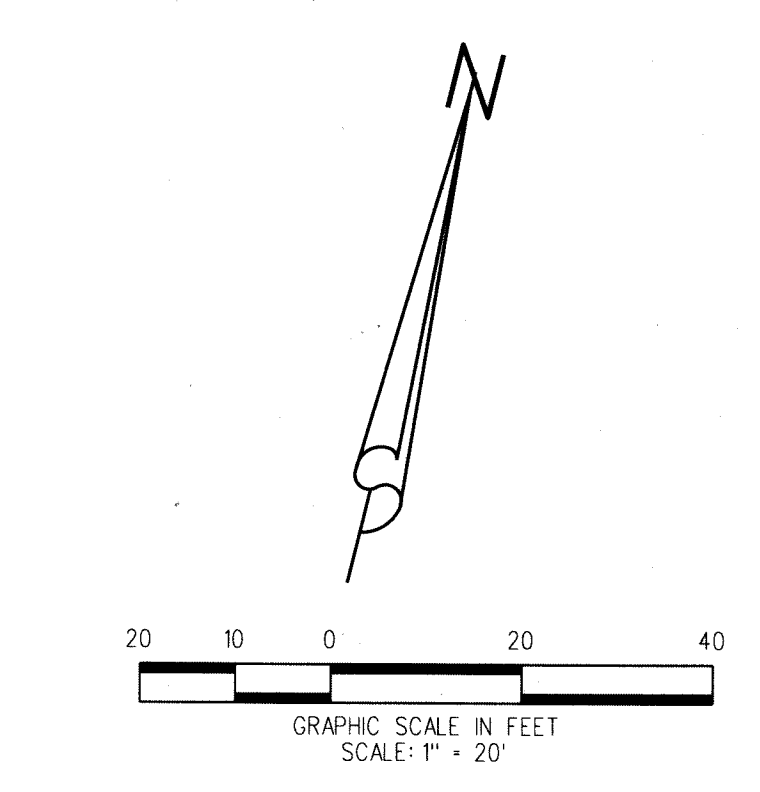
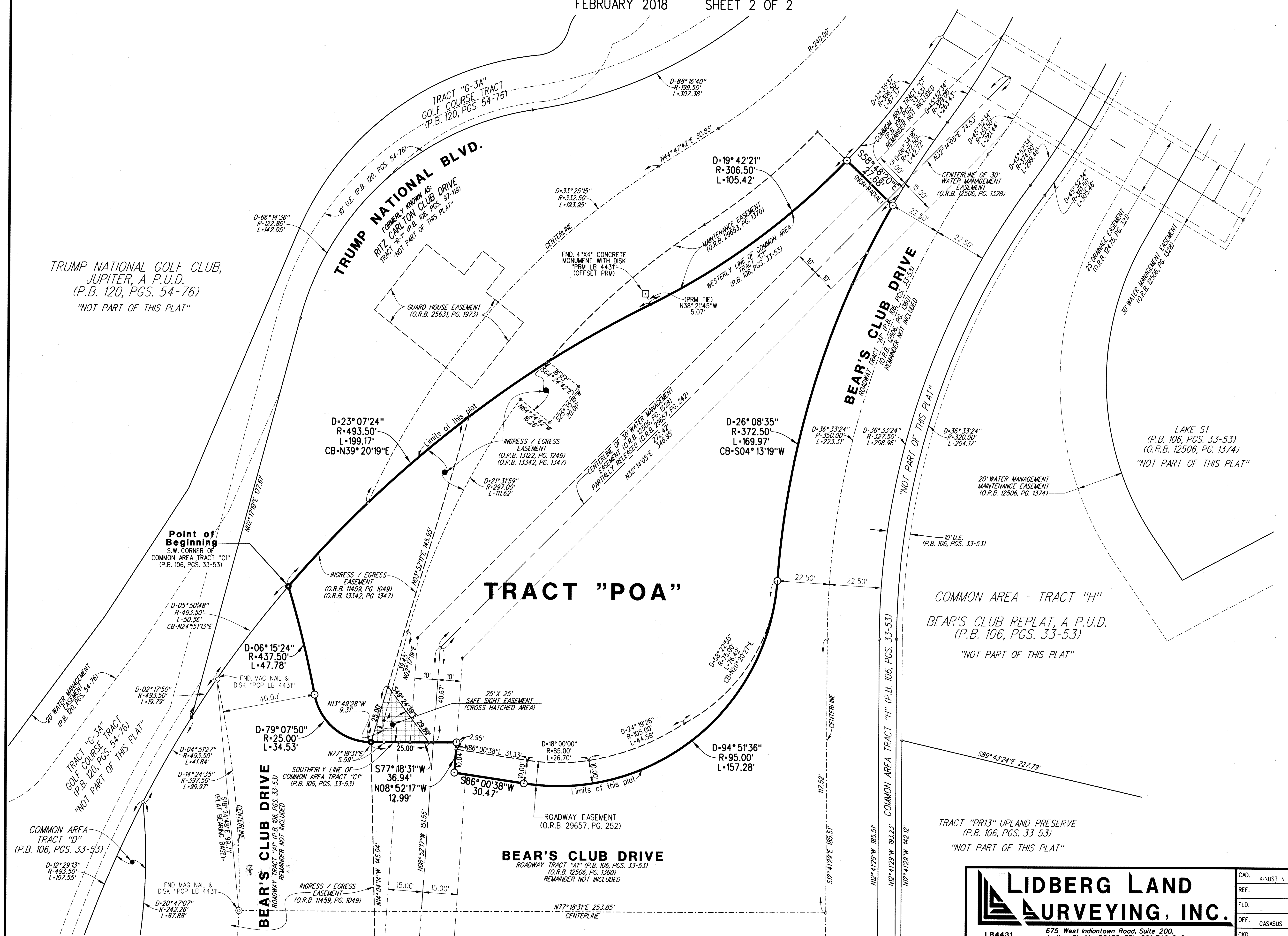
# BEAR'S CLUB REPLAT NO. 2, A P.U.D.

BEING A REPLAT OF A PORTION OF COMMON AREA TRACT "C1" AND A PORTION OF ROADWAY TRACT "A1",  
AS SHOWN ON BEAR'S CLUB REPLAT, A P.U.D., RECORDED IN PLAT BOOK 106, PAGES 33 THROUGH 53,  
PUBLIC RECORDS OF PALM BEACH COUNTY, FLORIDA  
LYING IN SECTION 19, TOWNSHIP 41 SOUTH, RANGE 43 EAST  
TOWN OF JUPITER, PALM BEACH COUNTY, FLORIDA

FEBRUARY 2018 SHEET 2 OF 2

145

TRUMP NATIONAL GOLF CLUB,  
JUPITER, A P.U.D.  
(P.B. 120, PGS. 54-76)  
"NOT PART OF THIS PLAT"



- LEGEND:**
- ⊙ DENOTES SET 5/8" IRON ROD & METAL CAP "PRM LB 4431"
  - DENOTES SET MAG NAIL & DISK "PRM LB 4431"
- ABBREVIATIONS:**
- FND. = FOUND
  - O.R.B. = OFFICIAL RECORD BOOK
  - P.B. = PLAT BOOK
  - PG. = PAGE
  - PGS. = PAGES

**LIDBERG LAND SURVEYING, INC.**  
LB4431 675 West Indiantown Road, Suite 200,  
Jupiter, Florida 33458 TEL. 561-746-8454

CAD. K:\JUST \ 194143 \ BEARCLUB \ 14-059-306 \ 14-059-306.DGN		
REF.	FB.	PG.
FLD.		JOB 14-059-306
OFF. CASASUS		DATE FEBRUARY 2018
CKD. D.C.L.	SHEET 2 OF 2	DWG. D14-059P